

App controlled Bluetooth Meeting Signage, set up your meeting easily and efficiently



- Electronic Paper Display
- Reusable, 5 years life span
- No wiring required
- No Internet required
- User friendly APP

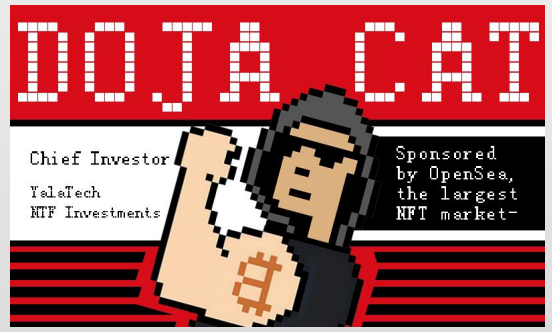
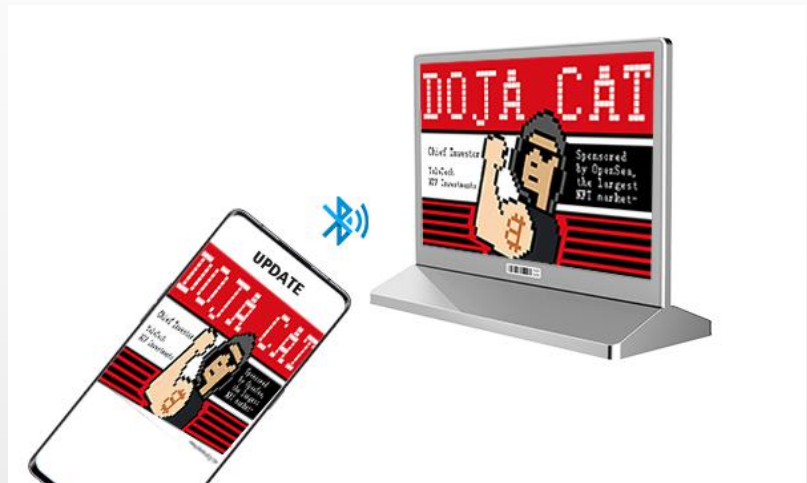
Designed for long time use to save your printing and material cost



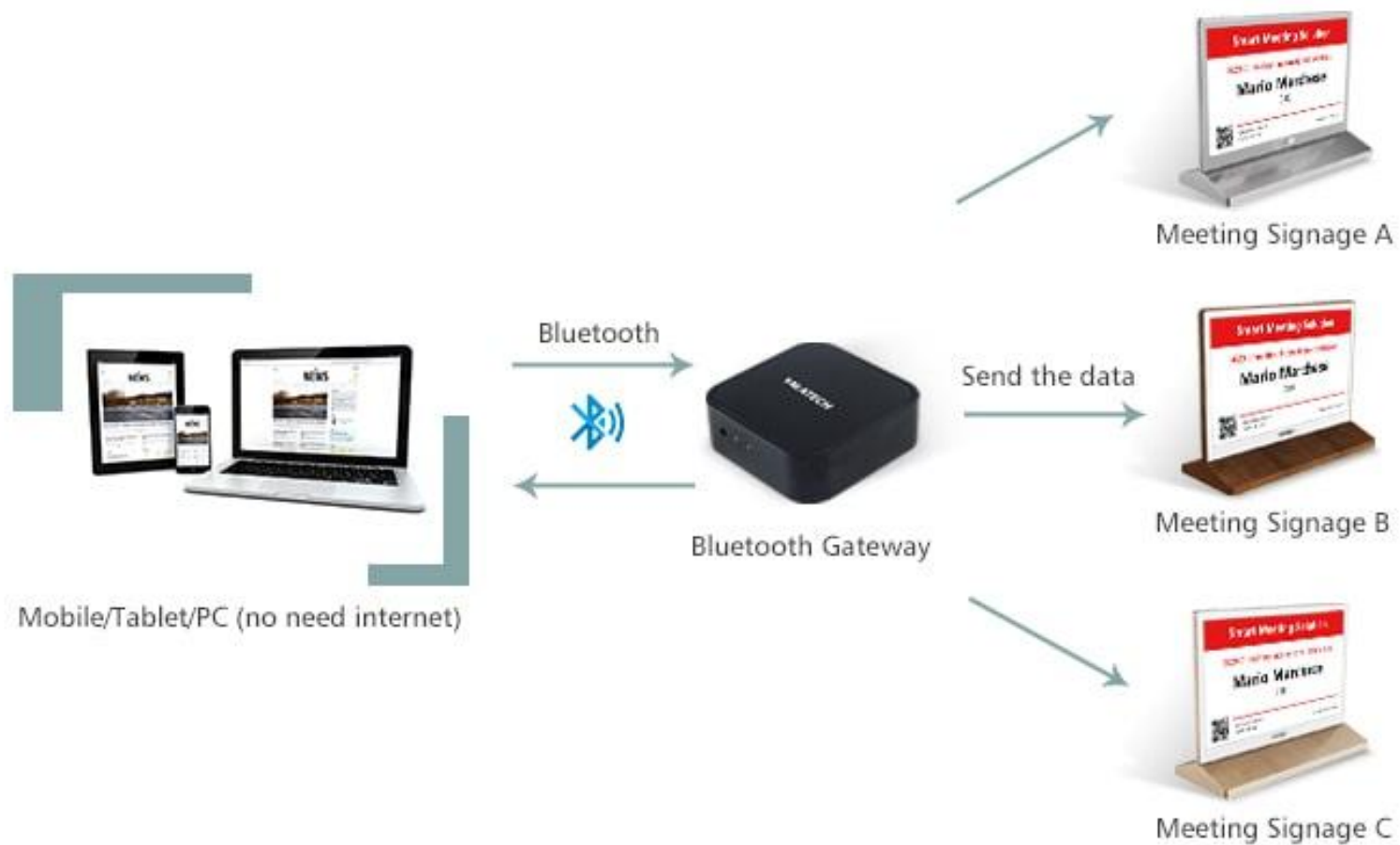
Using ultra-low power consumption e-ink display can be refreshed 100,000 times, the battery can be used for 5 years.

With a dedicated bluetooth gateway, you can update the display in bulk, simple and easy to use.

Display any photos at your pleasure from the APP

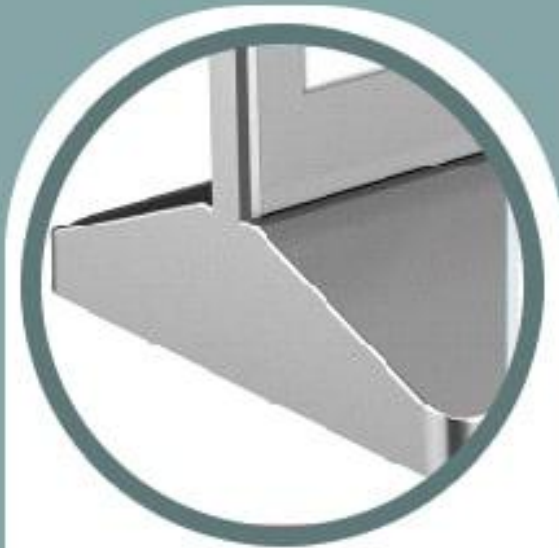


How it works



Update more than 100pcs Meeting Signage within in less than 20 minutes

PRODUCT DESIGN



Anti-fall and
wear-resistant
4H grade high
hardness
material



Extremely thin and
ligh
The thinnest
partis only 5.9mm



Double-sided 7.5inch
display

A variety of designs to choose from



Maple style



Gray



Walnut style

Product advantages



Ultra low power consumption

5 years of battery life for regular use



Easy deployment

No need to rely on the network, plug and play



Easy remote management

Bluetooth communication, support web portal and APP management



Fast refresh

Batch import of attendee list, set 100 pieces signage only takes 10 minutes

APPLICATION SCENARIOS



Hotel meeting hall



Conference

It can also be used at reception desk and any places where a signage is required.

Bluetooth Gateway

WORKS AS A ROUTER FOR MEETING SIGNAGE



- Bluetooth v4.2
- Pocket size, portable design
- Plug and play, no network settings required
- Support USB port
- LED indicator



SPECIFICATIONS:

Communication	Zigbee2.4G/Bluetooth
Communication distance	100 meters radius in open air
Operating Voltage	4.8~5.5V
Power	DC
Operating temperature	0-40 degree Celsius
Working humidity	10-90% RH
Product dimension	62mm*62mm*20mm
Weight	41g

WE MADE IT SIMPLE FOR YOU

Multi-terminal cross-platform operation for easy management

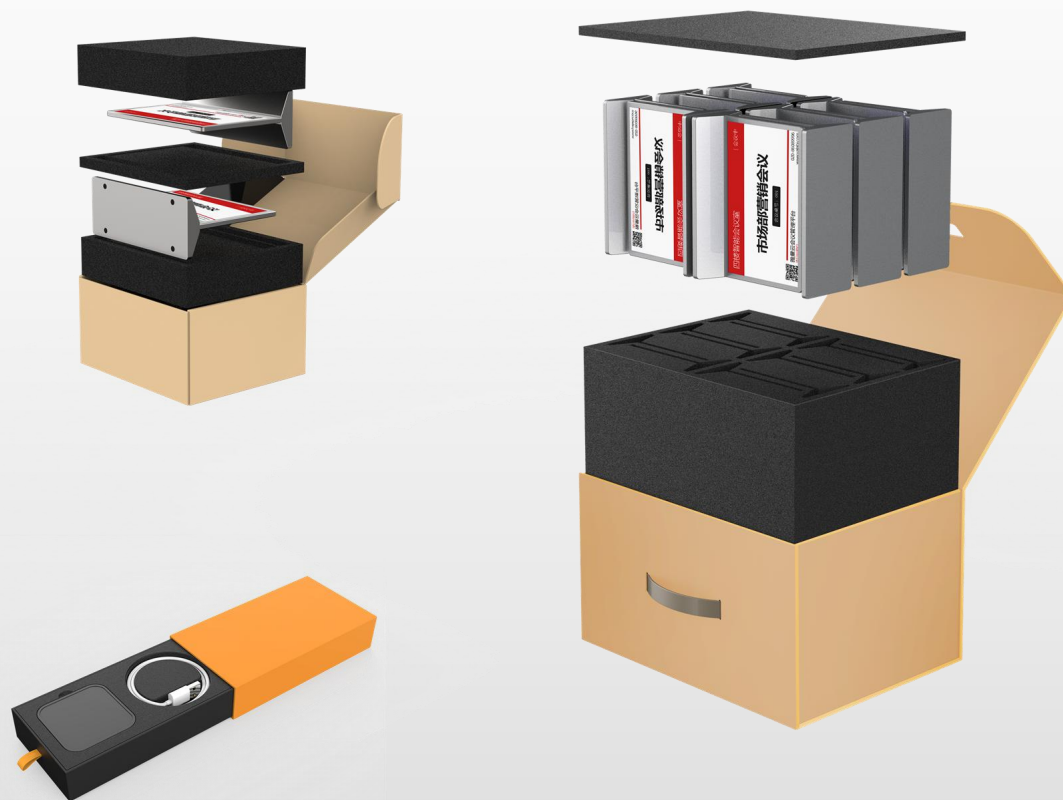


Specifications

Display: Full Graphic E-ink Display	Operating Voltage:3.1-3.3V
Display size: 7.5inch*2	Battery: coin cell CR2450 battery, 3600mAh
Resolution: 800*480	Battery lifespan: 10 years (2 updates/day)
DPI: 100	Operating temperature: 0-40 degree Celsius
Display area (mm): 163.20×97.92	Working humidity: 10-90% RH
Viewing angle: Nearly 180°	Product dimension:201mm*70mm*135mm
Pixel colors:BWR/BWY	Weight: 257±5g
Communication frequency band: 2.4G	



Package



Big pack(What's in the box)

- 12pcs Meeting Signage
- 1 piece bluetooth gateway
- User manual

Small pack(What's in the box)

- 2pcs Meeting Signage
- 1 piece bluetooth gateway
- User manual

Contact us

YalaTech Co., Ltd

Add: No. 38, Qide Road, Baiyun District, Guangzhou, Guangdong, China

sales@yalatechnology.com

www.yalatechnology.com

Tel: +86-20-31177067

Mobile: 86-13538102306